

# Complete - ready - to - use

## Stable / precise / variable / AM modulated

Specially made for Bush dac 90A and all two or three bands Radios

by **Yannis Karalis** [www.yanniskaralis.com](http://www.yanniskaralis.com)

Sine wave output (about) 170kHz -2.45 MHz,

3.5 Vpp

Amplitude control = Yes

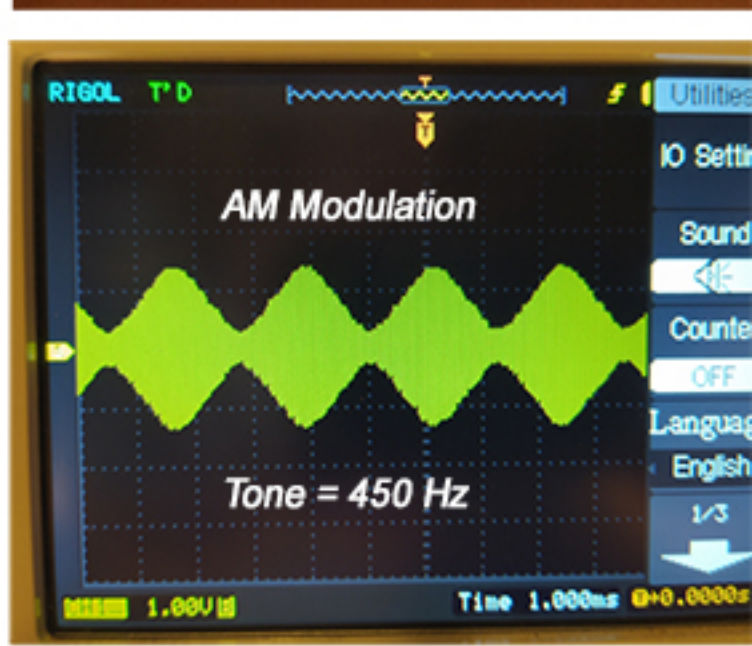
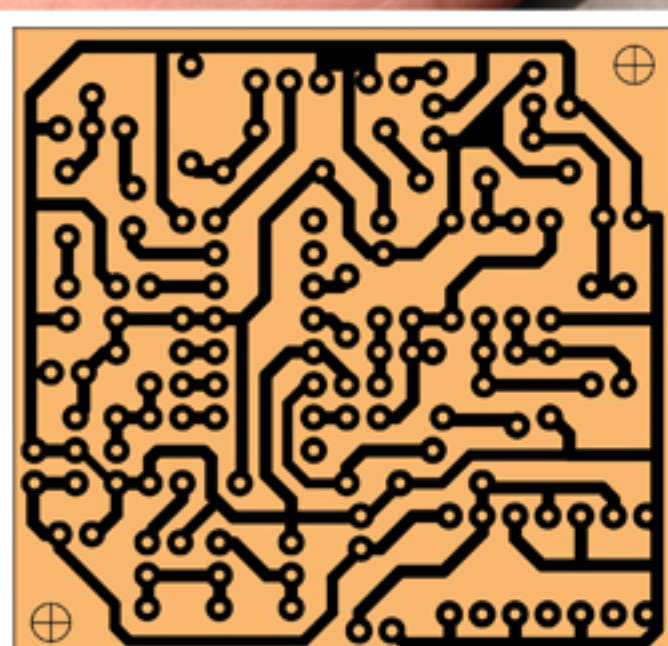
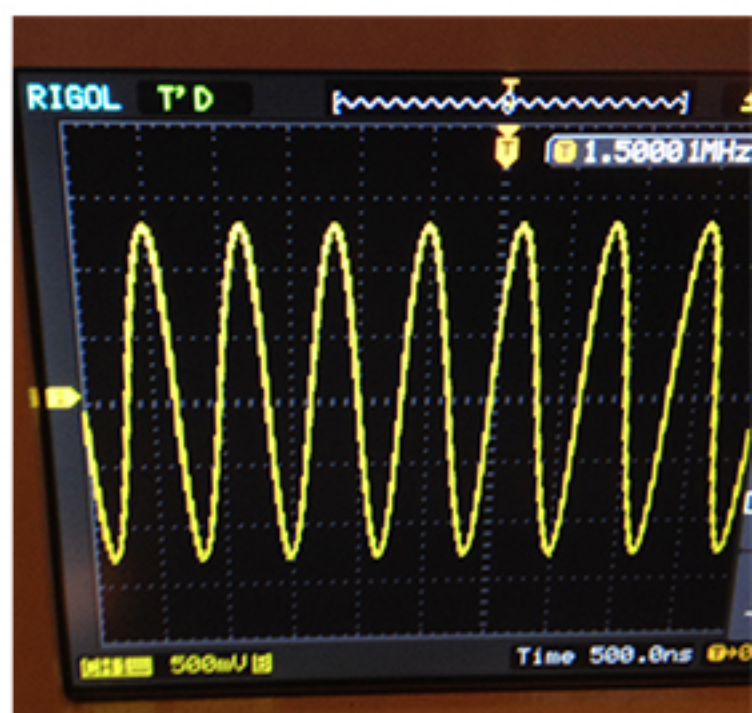
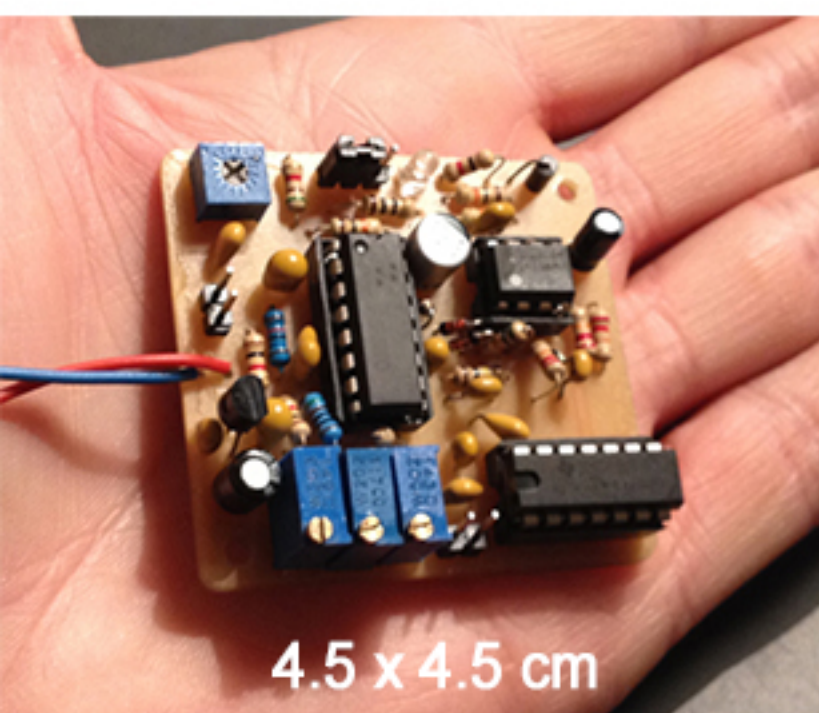
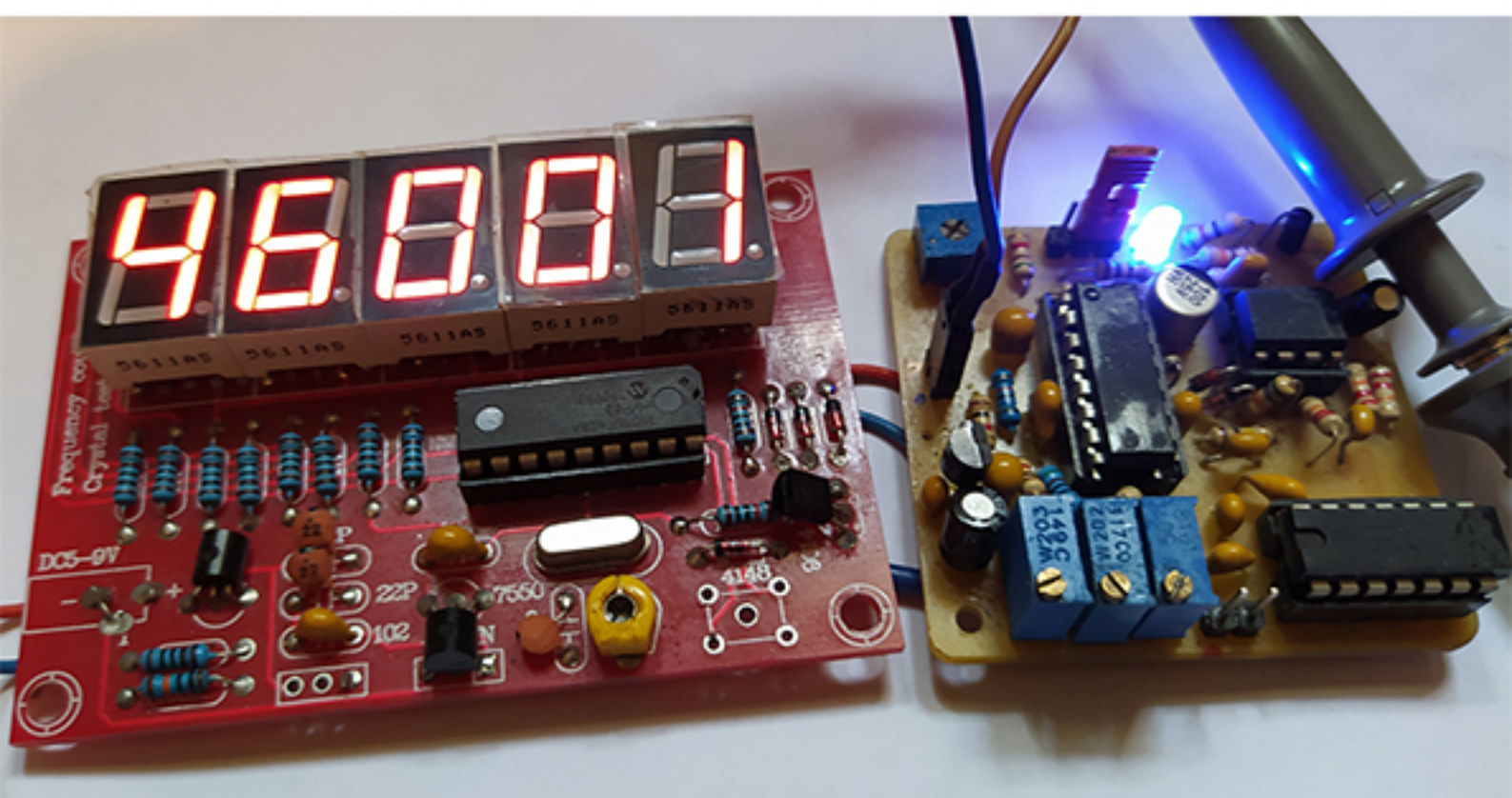
Sq. wave = TTL output

Freq adj = Coarse / Fine / Ultra fine

Modulation tone = 450 Hz

AM modulation = about 90%, ON / OFF

Power supply 9VDC - 12VDC

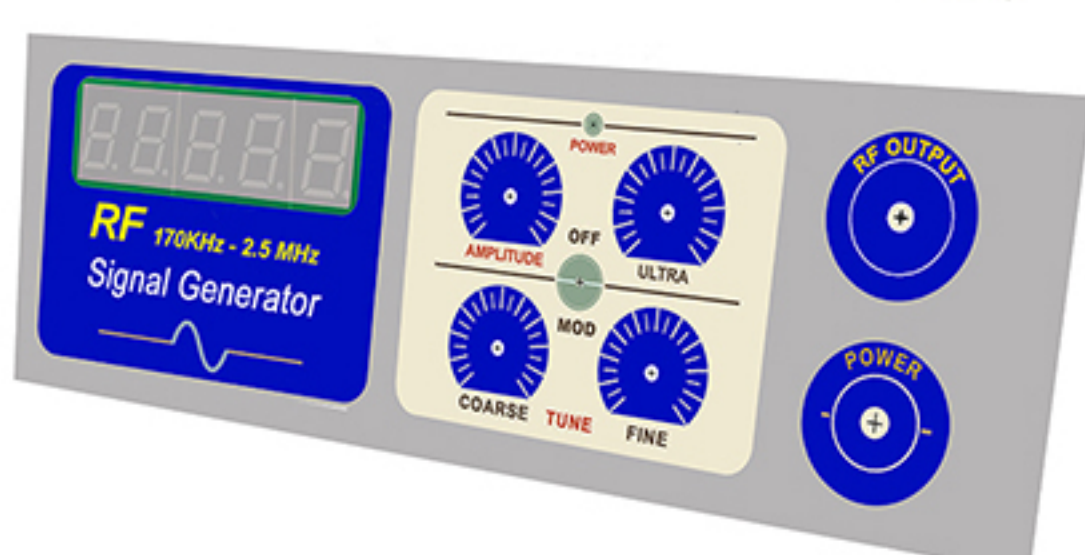
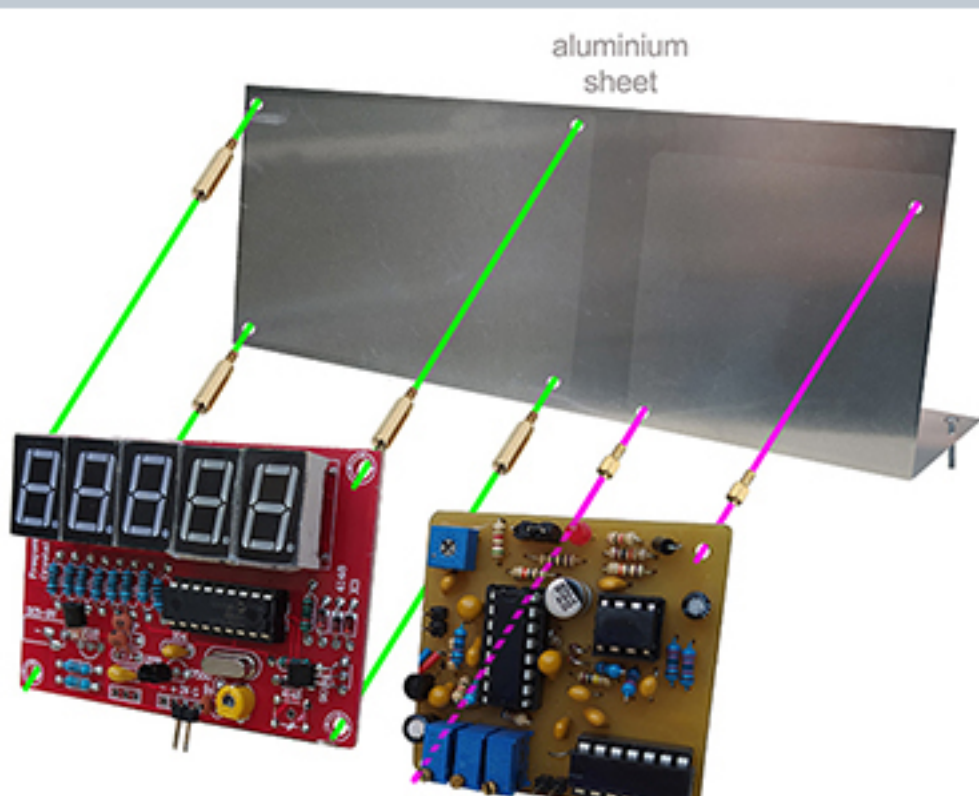


### ENCLOSING THE SMALL RF GEN. AND FREQ. COUNTER.

The PCBs must be screwd to the aluminium plate trough spacers.

Use longer spacers for Fr. counter and short (5mm) for Generator PCB to save some space needed for the pots.

Potentiometer = Alps RK097  
The thinner the better !



AM MODULATION  
OFF ON

AMPLITUDE

SINE WAVE OUTPUT  
BNC (PANEL MOUNT)  
TERMINATOR

POWER  
ON/OFF

TTL SQ. OUTPUT  
TO FREQ. METER

OR  
POWER SUPPLY

coarse fine ultra fine  
the smaller, the better

